



ELECTRICIAN'S INSTRUCTIONS MODEL NG110 & NG220

INSTALLATION

This power base is designed to control electric floor-warming systems. The resistive load must not exceed:

- NG110: 1800 watts (NI) @ 120 VAC (15 A)
- NG220: 3600 watts (NI) @ 240 VAC (15 A)

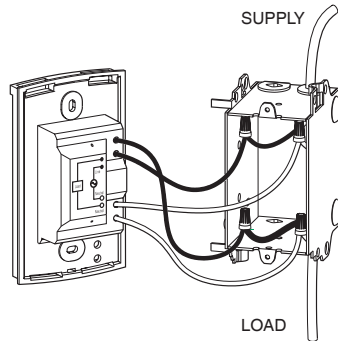
The thermostat is equipped with a Ground Fault Circuit Interrupter (GFCI) and therefore the isolation of the line and load are required for operation. During a ground fault, both line and load will be cut-off. Connect thermostat as shown on diagram.

Must be installed in accordance with national and local electrical codes.

TURN OFF POWER TO THE HEATING SYSTEM AT THE MAIN POWER PANEL TO AVOID ELECTRICAL SHOCK.

Connecting wires and mounting power base

- Connect the power base wires to the supply and load using solderless connectors for copper wires. See diagram.
- Push the excess wire back into the electrical box to prevent interference with the power base.



NOTE: All cables and connections must conform to the local electrical code.

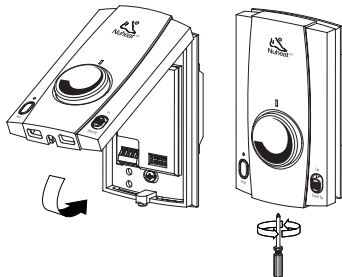
WARNING: Special CO/ALR solderless connectors must be used when connecting with aluminum conductors.

- Secure the power base with the screw.
- Once the power base is properly installed, mount the faceplate.

MOUNTING THE FACEPLATE

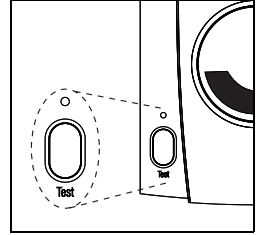
Keep the regulator's air vents clean and free from obstructions.

- 1 Locate the screw at the bottom of the faceplate.
- 2 Secure the faceplate with the screw.
- 3 Turn the power back on.



GFCI TEST

- 1 Increase the power until the LED on top of the knob activates. The LED activates only when the load is activated.
- 2 Press TEST. The test is successful if the TEST warning light is ON and power is cut-off.
- 3 Switch power to Stand By, then reset to ON.



If test fails:

- A) Verify installation.
- B) Check the load wires.
- C) Verify that the thermostat is in heating mode (LED is ON).

Once you've identified the problem, run the GFCI test again.

TECHNICAL SPECIFICATIONS

	NG110	NG220
Supply	120 VAC, 50/60 Hz	240 VAC, 50/60 Hz
Load	15 A maximum	
Power	1800 watts (NI) @ 120 VAC	3600 watts (NI) @ 240 VAC
Ground Fault Circuit Interrupter (GFCI)	Class A (5 mA)	
Approvals	CSA / C,US	
Storage	-4°F to 120°F (-20°C to 50°C)	

WARRANTY

NUHEAT INDUSTRIES ONE (1) YEAR LIMITED WARRANTY

This product is guaranteed against workmanship defects for a one-year period following the initial date of purchase. During this period, NUHEAT will repair or replace, at our option and without charge, any defective product which has been used under normal conditions. The warranty does not cover delivery costs and does not apply to products poorly installed or randomly damaged following installation. This warranty cancels and replaces any other manufacturer's express or implied warranty as well as any other company commitment.

NUHEAT cannot be held liable for related or random damages following the installation of this product. The defective product as well as the purchase invoice must be returned to the place of purchase or mailed, prepaid and insured, to the following address:

NUHEAT INDUSTRIES LTD.

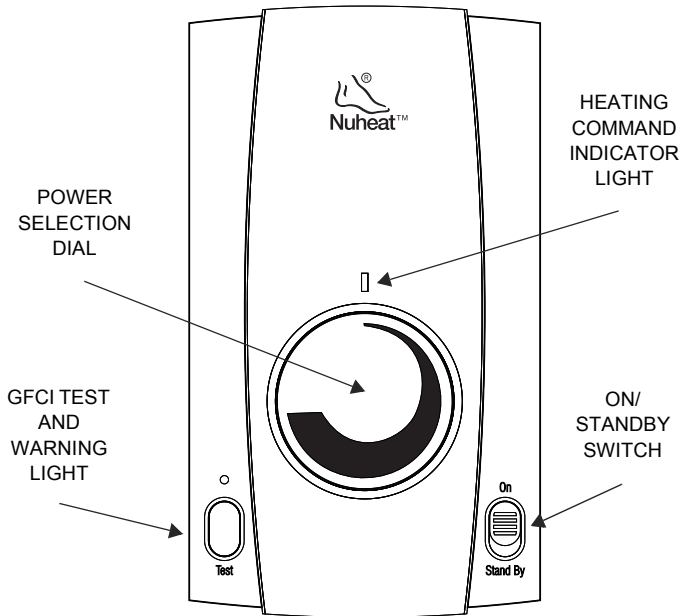
USA	CANADA
880 Grant Avenue	1689 Cliveden Avenue
Blaine, WA	Delta, BC
98230	V3M 6V5

1 (800) 778-9276 • www.nuheat.com

NUHEAT™ is a registered trademark of Nuheat Industries LTD.



HOMEOWNER'S GUIDE MODEL NDG6110 & NDG6220



INTRODUCTION

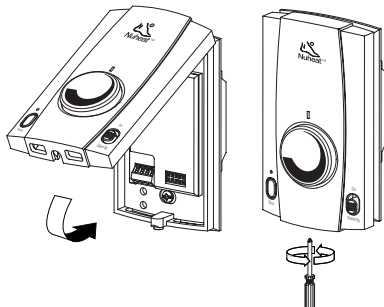
The NDG6110/NDG6220 Floor Control Regulator operates like a dimmer switch to allow you to easily adjust the amount of power sent to your Nuheat floor heating system.

Specially designed for Nuheat, this regulator features an integrated GFCI test button and warning light for added security and ease of installation.

This regulator has an On/Stand By switch making it possible to put it in sleep mode when its use is not required (e.g. summer).

MOUNTING THE FACEPLATE

Align the bracket tabs on the faceplate with the holes located on the power base.

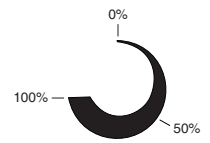


NOTE: Keep the regulator's air vents clean and free from obstructions.

OPERATION

This floor control operates on perpetual 15-minute heating cycles. If the dial is set half-way, the floor will heat for 50% of the next 15 minutes. It will be ON for 7.5 minutes and OFF for 7.5 minutes.

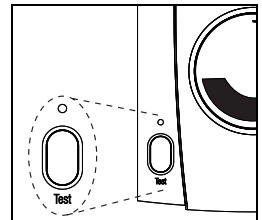
At the beginning of each new cycle this floor regulator re-calculates the percentage of time the floor will heat, according to the position of the dial. The dial image corresponds to a scale of 0 to 100%.



GFCI TEST

We recommend you test the GFCI monthly. If the test is not successful, cut power to the heating system and call customer service, or return the regulator to your supplier for verification.

- 1 Increase the power until the LED on top of the dial activates. The LED activates when the load is activated.
- 2 Press TEST. The test is successful if the TEST warning light is ON and power is cut-off.
- 3 Switch power to Stand By, then reset to ON.



TEST warning light: If this comes on during normal operation, cut power to the heating system and have an electrician verify the installation.

TECHNICAL SPECIFICATIONS

Models: NDG6110 & NDG6220

Power setting range: from 1 to 100%

Storage: -4°F to 120°F (-20°C to 50°C)

WARRANTY

NUHEAT INDUSTRIES ONE (1) YEAR LIMITED WARRANTY

This product is guaranteed against workmanship defects for a one-year period following the initial date of purchase. During this period, NUHEAT will repair or replace, at our option and without charge, any defective product which has been used under normal conditions. The warranty does not cover delivery costs and does not apply to products poorly installed or randomly damaged following installation. This warranty cancels and replaces any other manufacturer's express or implied warranty as well as any other company commitment.

NUHEAT cannot be held liable for related or random damages following the installation of this product. The defective product as well as the purchase invoice must be returned to the place of purchase or mailed, prepaid and insured, to the following address:

NUHEAT INDUSTRIES LTD.

USA
880 Grant Avenue
Blaine, WA
98230

CANADA
1689 Cliveden Avenue
Delta, BC
V3M 6V5

1 (800) 778-9276 • www.nuheat.com

NUHEAT™ is a registered trademark of Nuheat Industries LTD.